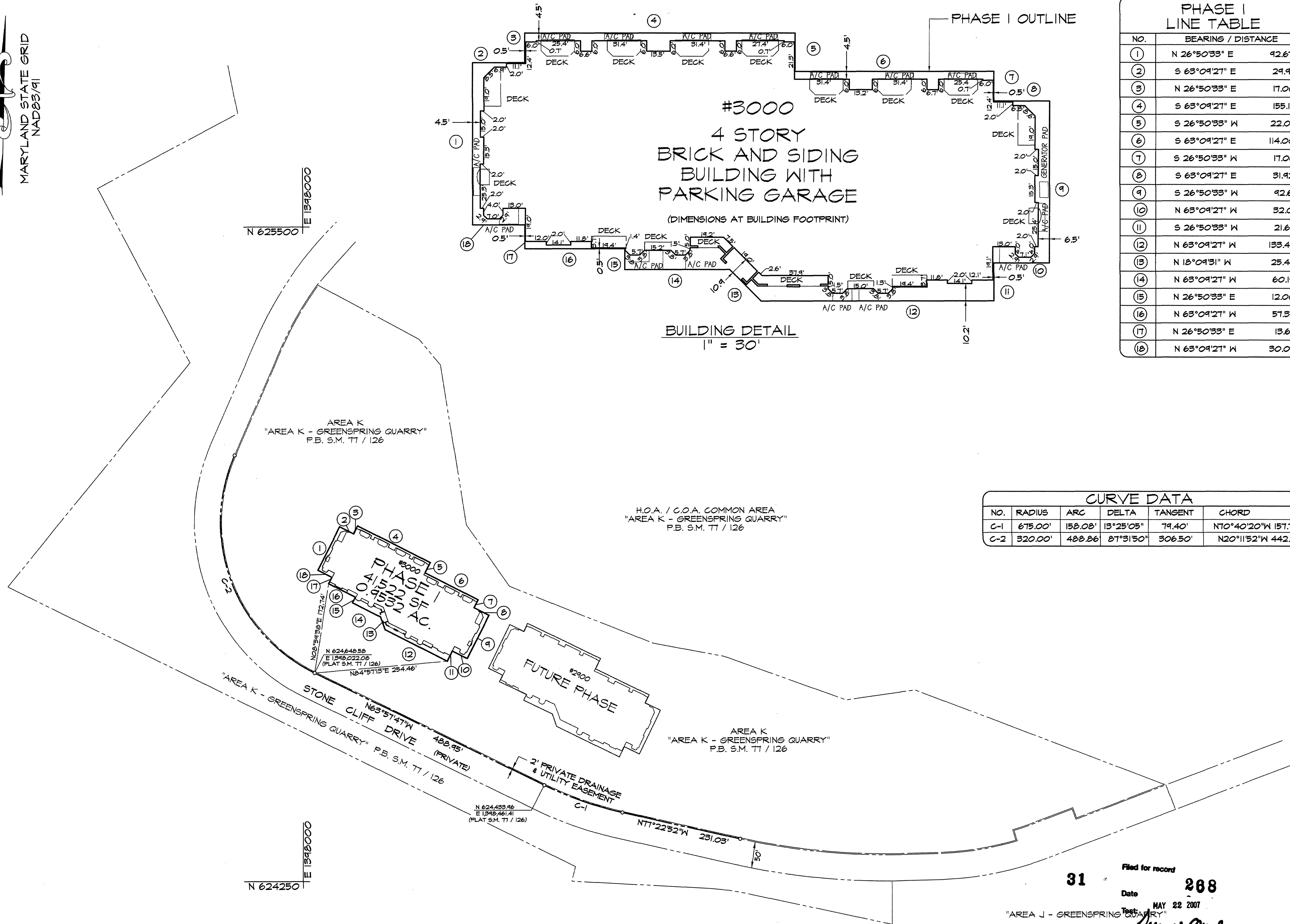


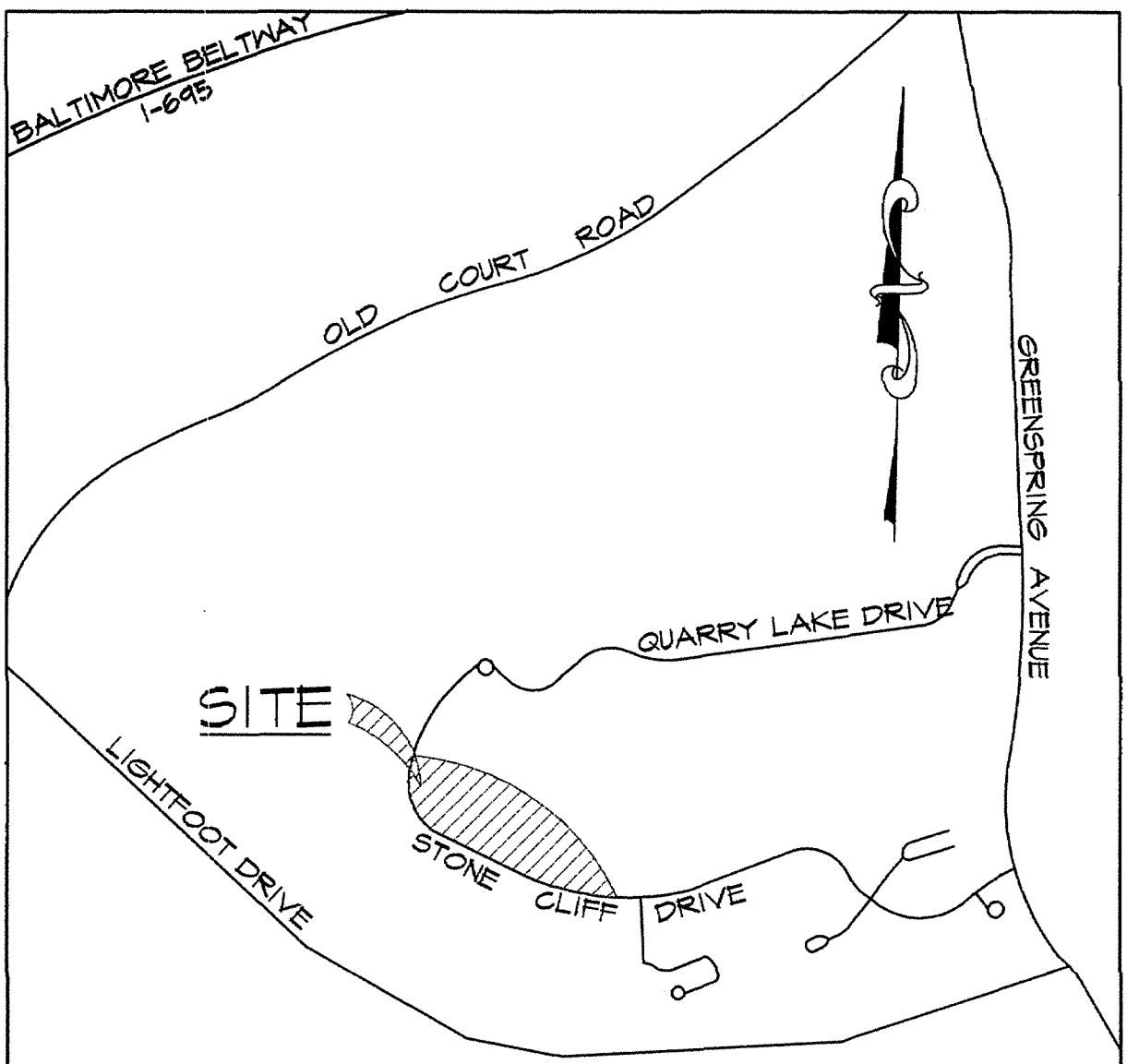


MARYLAND STATE GRID
NAD83/91



PHASE I LINE TABLE		
NO.	BEARING / DISTANCE	
①	N 26°50'33" E	42.67
②	S 63°04'27" E	24.92
③	N 26°50'33" E	17.00
④	S 63°04'27" E	155.17
⑤	S 26°50'33" W	22.00
⑥	S 63°04'27" E	114.00
⑦	S 26°50'33" W	17.00
⑧	S 63°04'27" E	31.92
⑨	S 26°50'33" W	92.67
⑩	N 63°04'27" W	32.00
⑪	S 26°50'33" W	21.67
⑫	N 63°04'27" W	133.43
⑬	N 15°09'31" W	25.46
⑭	N 63°04'27" W	60.19
⑮	N 26°50'33" E	12.00
⑯	N 63°04'27" W	57.37
⑰	N 26°50'33" E	13.67
⑱	N 63°04'27" W	30.00

CURVE DATA				
NO.	RADIUS	ARC	DELTA	TANGENT
C-1	675.00'	158.08'	13°25'05"	79.40'
C-2	320.00'	488.86'	87°31'50"	306.50'



VICINITY MAP
SCALE: 1" = 1000'

OWNERS CERTIFICATION

THE UNDERSIGNED, OWNER OF THE PROPERTY SHOWN HEREON, ADOPTS THIS CONDOMINIUM PLAT PURSUANT TO THE PROVISIONS AND REQUIREMENTS OF THE MARYLAND CONDOMINIUM ACT, REAL PROPERTY ARTICLE 11-101 ET. SEQ. OF THE ANNOTATED CODE OF MARYLAND, AND ASSENTS TO THE DESCRIBED PROPERTY BEING SUBJECTED TO SAID CONDOMINIUM.

BY: ALFRED S. GUERIERI JR. 5-16-07
ALFRED S. GUERIERI JR. AS ATTORNEY IN FACT DATE
BEAZER HOMES, CORP.

SURVEYORS CERTIFICATION

I HEREBY CERTIFY THAT THIS CONDOMINIUM PLAT, CONSISTING OF SEVEN (7) SHEETS, SHOWING THE LAND AND BUILDINGS, AS CONSTRUCTED, IS CORRECT. THAT IT IS A CONDOMINIUM PLAT OF A PORTION OF AREA K AS SHOWN ON THE PLAT OF "AREA K GREENSPRING QUARRY" WHICH IS RECORDED AMONG THE LAND RECORDS OF BALTIMORE COUNTY IN PLAT BOOK S.M. T1, PAGE 126.

THAT IT IS IN ACCORDANCE WITH THE REQUIREMENTS OF TITLE 11 OF THE REAL PROPERTY ARTICLE OF THE ANNOTATED CODE OF MARYLAND (2003 REPLACEMENT VOLUME), AS AMENDED.

I FURTHER CERTIFY THAT THE PLAT, TOGETHER WITH THE APPLICABLE WORDING OF THE DECLARATION, IS A CORRECT REPRESENTATION OF THE CONDOMINIUM DESCRIBED AND THE IDENTIFICATION AND LOCATION OF EACH UNIT AND THE COMMON ELEMENTS AS CONSTRUCTED, CAN BE DETERMINED FROM THEM.

I FURTHER CERTIFY THAT THE LAND AREA DESIGNATED HEREON AS "PHASE I 2900/3000 STONECLIFF CONDOMINIUM ASSOCIATION, INC." IS 41,522 SQUARE FEET OR 0.9532 ACRES OF LAND.

Charles S. Ruzicka 5-16-07
CHARLES S. RUZICKA DATE
REGISTERED PROFESSIONAL LAND SURVEYOR
MARYLAND LICENSE NO. 21169



31
Date MAY 22 2007
Tested by R. J. Smith
Clerk
SM
31-268

KCI
TECHNOLOGIES
ENGINEERS
PLANNERS
SCIENTISTS
CONSTRUCTION MANAGERS
10 NORTH PARK DRIVE
HUNT VALLEY, MD 21030
PHONE: (410) 316-7800
FAX: (410) 316-7817
WWW.KCI.COM

REVISIONS			
NO.	DATE	DESCRIPTION	BY

DATE 5-9-07
SCALE 1"=100'
DESIGNED BY R.L.C.
DRAWN BY M.J.W.

PLAT OF CONDOMINIUM SUBDIVISION
BUILDING LOCATION PLAN
PHASE I
2900/3000 STONECLIFF
CONDOMINIUM ASSOCIATION, INC.
PORTION OF PLAT S.M. T1 - 126
BALTIMORE COUNTY, MARYLAND

DRAWING NO.
SHEET 1 OF 7
KCI JOB NUMBER 0105391808

BALTIMORE COUNTY CIRCUIT COURT (Condominium Plats, BA) Condominium Book SM 31, pp. 268-274, MSA, S1265_1735. Date available 2007/05/22. Printed 05/30/2016.

Plotted: 08:25 AM on Friday, May 11, 2007
By: KCI Technologies
File: M:\2005\01053918\Drawings\Building K-4, Condo K-4, GARAGE.dgn



FEE SIMPLE STORAGE UNIT TABLE			
NO.	AREA (SF)	BOTTOM ELEVATION	TOP ELEVATION
S49	55	439.1'	448.1'
S50	55	439.1'	448.1'
S51	56	439.1'	448.1'

31
Filed for record
Date MAY 22 2007
Test: *Signature*
Clerk
SM
31-269

LEGEND
S42 STORAGE UNIT
G.C.E. GENERAL COMMON ELEMENT
L.C.E. LIMITED COMMON ELEMENT
SF SQUARE FEET
HC HANDICAP PARKING SPACE
&

PLAT RECORD
TOTAL 15.00
Ref: 2692 Rpt: 2576
SA 15.00 Bk: 2624
File: 22-2007 31-44

KCI TECHNOLOGIES
ENGINEERS
PLANNERS
SCIENTISTS
CONSTRUCTION MANAGERS
10 NORTH PARK DRIVE
HUNT VALLEY, MD 21030
PHONE (410) 316-7800
FAX (410) 316-7817
www.kci.com

REVISIONS			
NO.	DATE	DESCRIPTION	BY

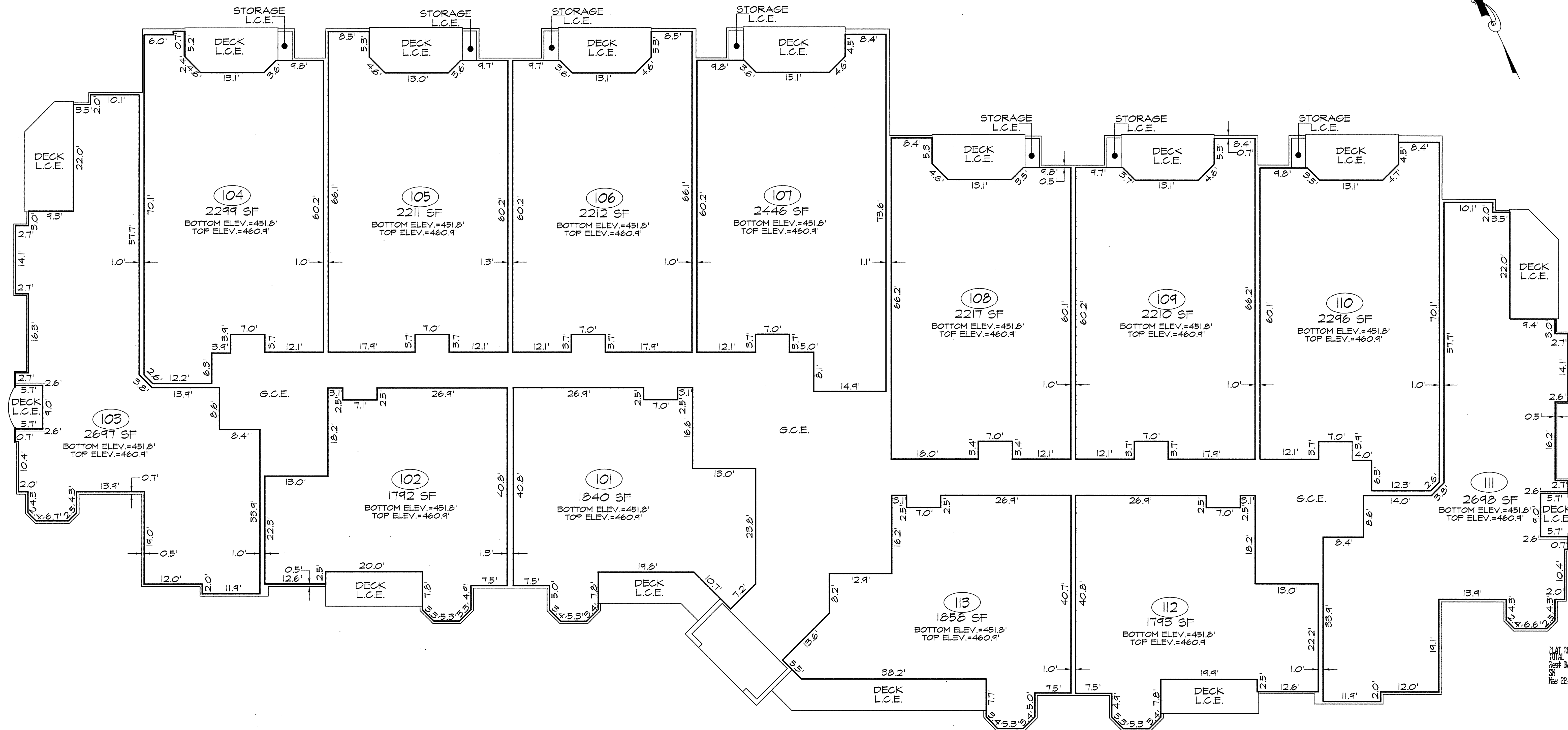
PLAT OF CONDOMINIUM SUBDIVISION
GARAGE LEVEL
PHASE I
2900/3000 STONECLIFF
CONDOMINIUM ASSOCIATION, INC.
PORTION OF PLAT S.M. 77 - 126
THIRD ELECTION DISTRICT BALTIMORE COUNTY, MARYLAND

DRAWING NO.
SHEET 2 OF 7
KCI JOB NUMBER
0105391808

1328140 MSA SM 1265 1735-2



Plotted: 08:50 AM on Friday, May 11, 2007
File: MA 2005.00053918.dwg
C:\Program Files\Autodesk\AutoCAD 2005\Drawings\Building\K-4_Condo\K-4_FIRSTFLOOR.dwg

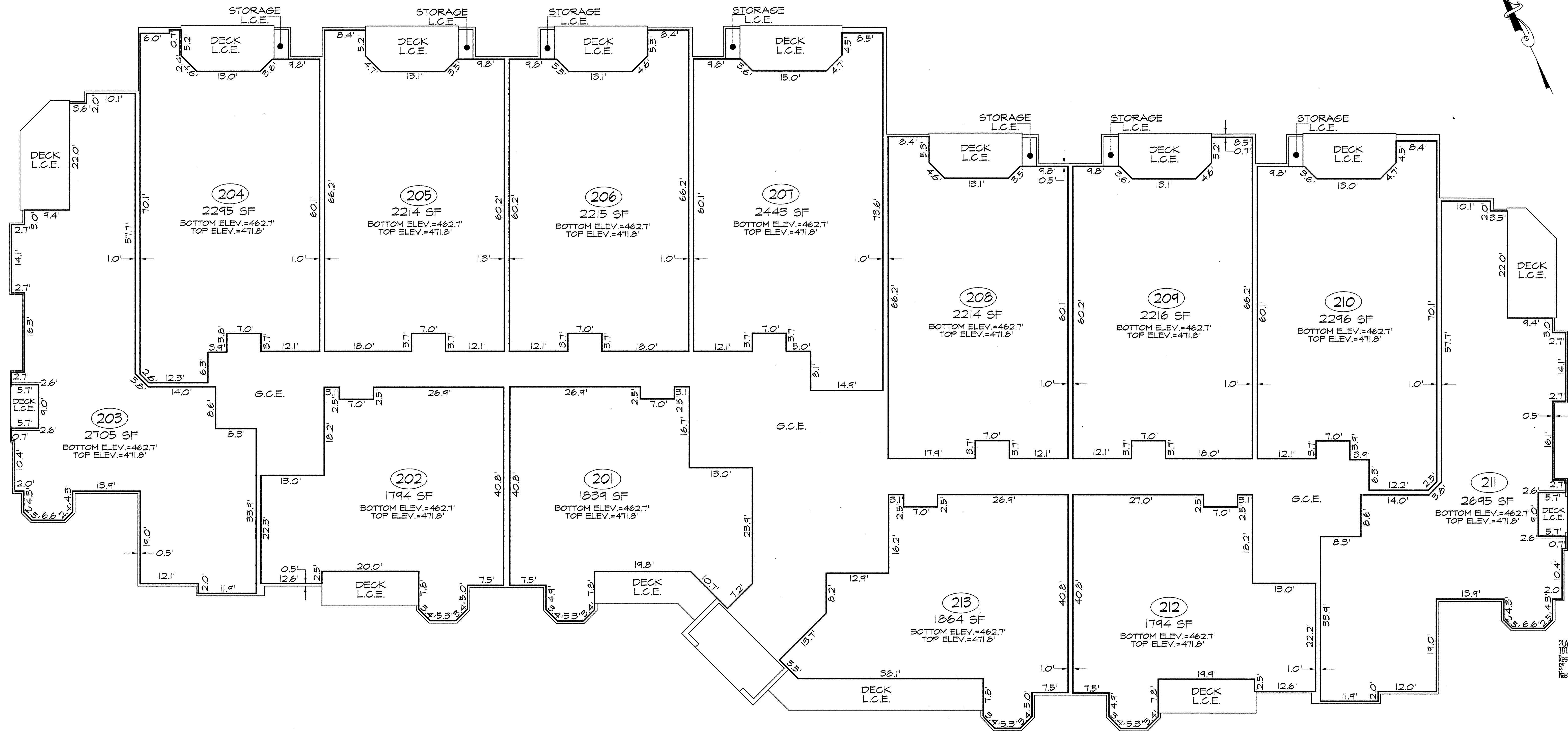


31
Date MAY 22 2007
Tested by [Signature]
Clerk
SM
31-270

LEGEND
UNIT BOUNDARY
G.C.E. GENERAL COMMON ELEMENT
L.C.E. LIMITED COMMON ELEMENT
SF SQUARE FEET

 KCI TECHNOLOGIES ENGINEERS PLANNERS SCIENTISTS CONSTRUCTION MANAGERS 10 NORTH PARK DRIVE HUNT VALLEY, MD 21030 PHONE: (410) 316-7800 FAX: (410) 316-7817 www.kci.com	REVISIONS			DATE 5-9-07
	NO.	DATE	DESCRIPTION	BY
PLAT OF CONDOMINIUM SUBDIVISION FIRST FLOOR CONDOMINIUM UNITS PHASE I 2900/3000 STONECLIFF CONDOMINIUM ASSOCIATION, INC. PORTION OF PLAT S.M. 11 - 126 THIRD ELECTION DISTRICT BALTIMORE COUNTY, MARYLAND				DRAWING NO. SHEET 3 OF 7 KCI JOB NUMBER 0105391803

138141 MSA SSM 1265 17353



31

Filed for record

Date MAY 22 2007

Test:

Signature

Clerk

SM

31-271

LEGEND

- UNIT BOUNDARY
- G.C.E. GENERAL COMMON ELEMENT
- L.C.E. LIMITED COMMON ELEMENT
- SF SQUARE FEET

KCI
ENGINEERS
PLANNERS
SCIENTISTS
CONSTRUCTION MANAGERS
10 NORTH PARK DRIVE
HUNT VALLEY, MD 21030
PHONE (410) 316-7800
FAX (410) 316-7817
www.kci.com

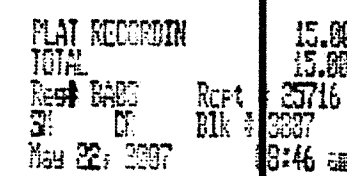
REVISIONS			
NO.	DATE	DESCRIPTION	BY

DATE 5-9-07
SCALE 1"=10'
DESIGNED BY R.L.C.
DRAWN BY M.J.H.

PLAT OF CONDOMINIUM SUBDIVISION
SECOND FLOOR CONDOMINIUM UNITS
PHASE I
2900/3000 STONECLIFF
CONDOMINIUM ASSOCIATION, INC.
PORTION OF PLAT S.M. 77 - 126
THIRD ELECTION DISTRICT BALTIMORE COUNTY, MARYLAND

DRAWING NO.
SHEET 4 OF 7
KCI JOB NUMBER 0105391803

8130142 HSA Ssn 1265 1735-4



Filed for record

Date: MAY 22 2007
Test: 1

Regina M. ...
Clerk

Clerk

SM
31-272

UNIT BOUNDARY	
G.C.E.	GENERAL COMMON ELEMENT
L.C.E.	LIMITED COMMON ELEMENT
SF	SQUARE FEET

REVISIONS				DATE
NO.	DATE	DESCRIPTION	BY	
				5-9-07
				SCALE
				1"=10'
				DESIGNED BY
				R.L.C.
				DRAWN BY
				M.J.W.

PLAT OF CONDOMINIUM SUBDIVISION
THIRD FLOOR CONDOMINIUM UNITS
PHASE I
2900/3000 STONECLIFF
CONDOMINIUM ASSOCIATION, INC.
PORTION OF PLAT 547 - 126
THIRD ELECTION DISTRICT BALTIMORE COUNTY, MARYLAND

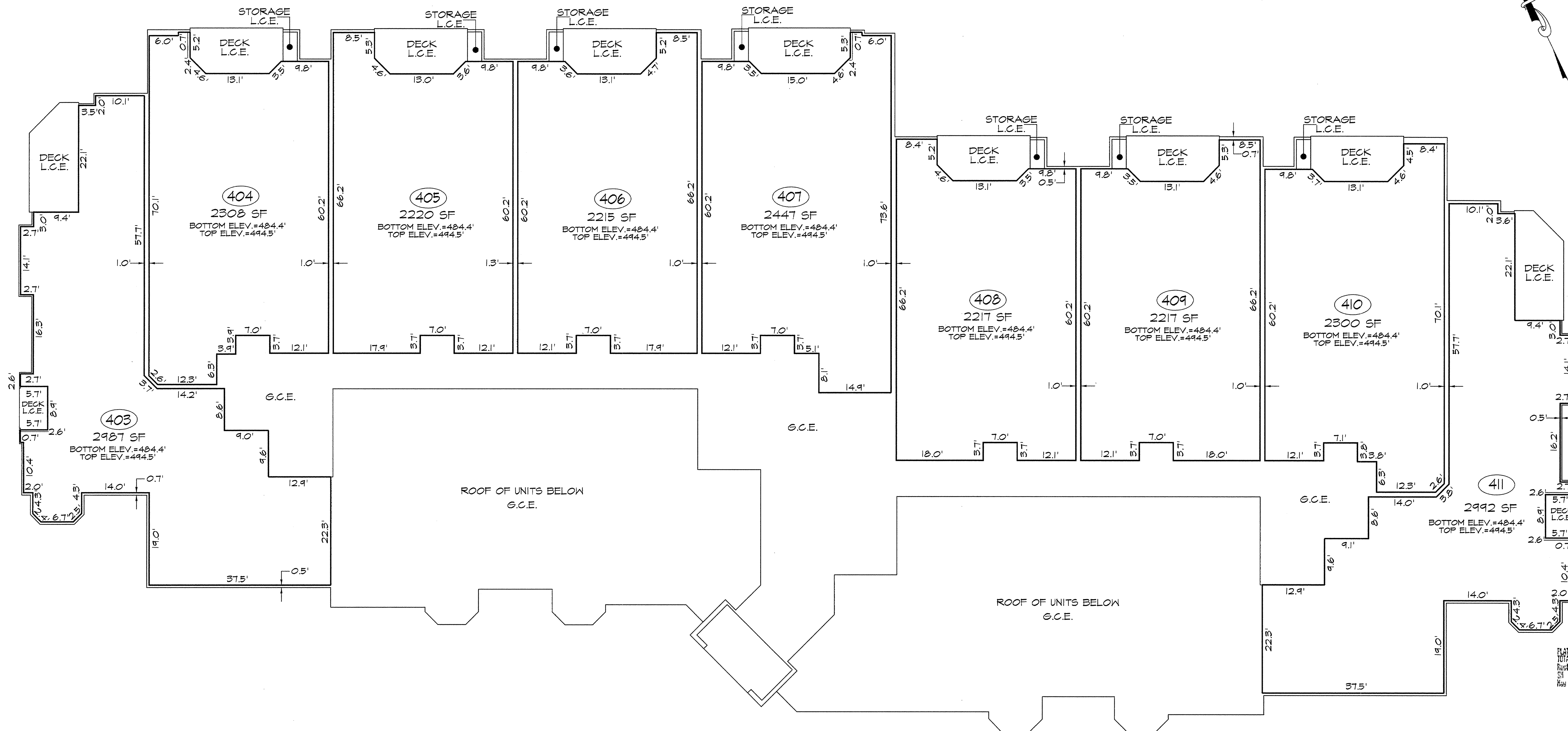
DRAWING NO.

SHEET 5 OF 7

KCI JOB NUMBER

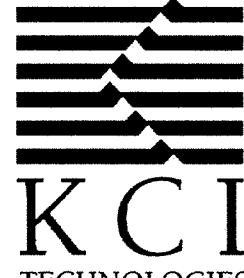
01053918QB

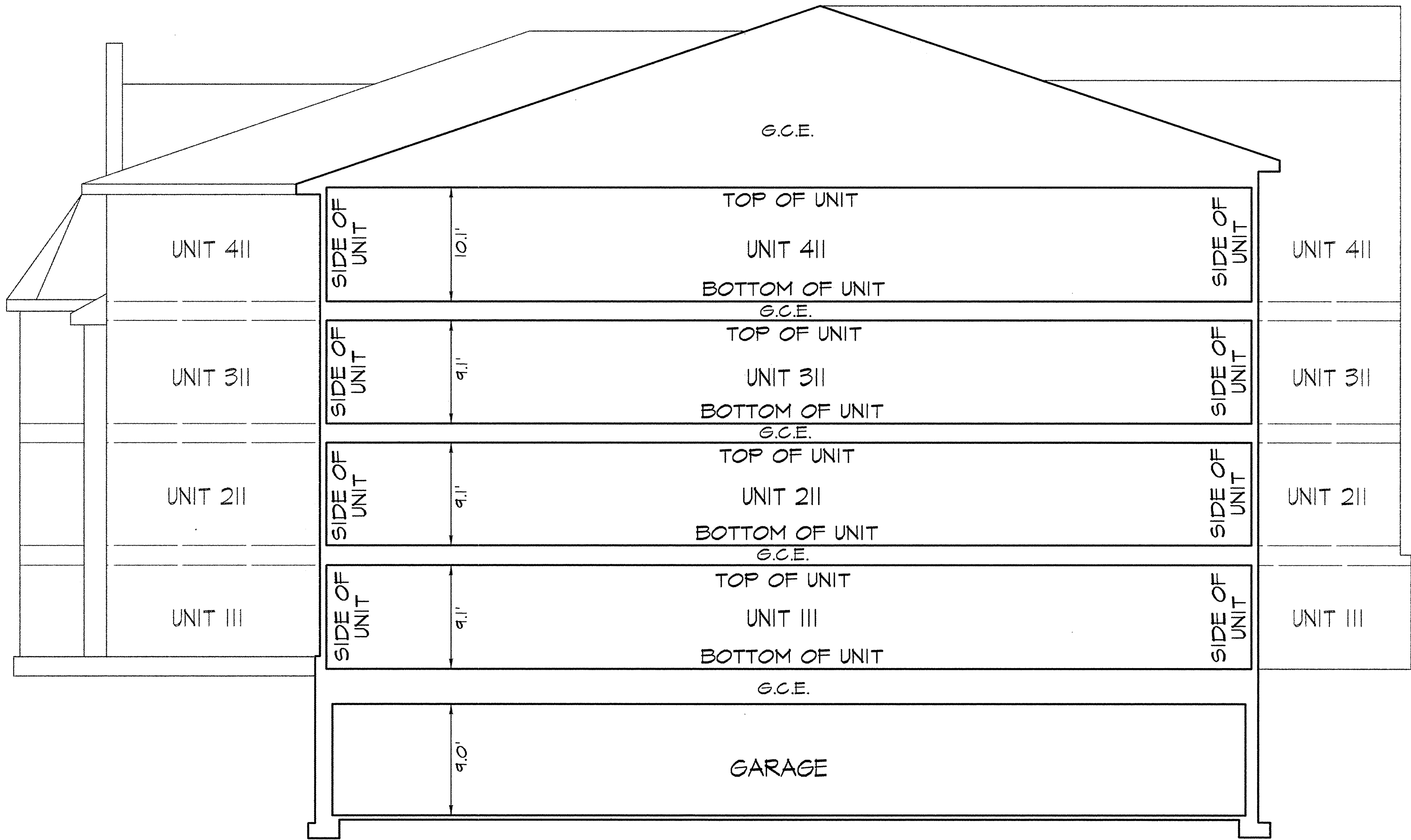
930143 MJA SSN 1265 1735-S



31
Date MAY 22 2007
Clerk
SM
31-273

LEGEND
UNIT BOUNDARY
G.C.E. GENERAL COMMON ELEMENT
L.C.E. LIMITED COMMON ELEMENT
SF SQUARE FEET

 ENGINEERS PLANNERS SCIENTISTS CONSTRUCTION MANAGERS 10 NORTH PARK DRIVE HUNT VALLEY, MD 21030 PHONE: (410) 316-7800 FAX: (410) 316-7817 www.kci.com	REVISIONS			DATE 5-9-07
	NO.	DATE	DESCRIPTION	BY
DESIGNED BY R.L.C.				
DRAWN BY M.J.W.				
PLAT OF CONDOMINIUM SUBDIVISION FOURTH FLOOR CONDOMINIUM UNITS PHASE I 2900/3000 STONECLIFF CONDOMINIUM ASSOCIATION, INC. PORTION OF PLAT S.M. 11 - 126 THIRD ELECTION DISTRICT BALTIMORE COUNTY, MARYLAND				DRAWING NO. SHEET 6 OF 7 KCI JOB NUMBER 01053918GB



TYPICAL SECTION
NOT TO SCALE

31

Filed for record

274

Date MAY 22 2007

Test: *Augustine P. Smith*
Clerk

SM
31-274



ENGINEERS
PLANNERS
SCIENTISTS
CONSTRUCTION MANAGERS
10 NORTH PARK DRIVE
HUNT VALLEY, MD 21030
PHONE (410) 316-7800
FAX (410) 316-7817
www.kci.com

REVISIONS			
NO.	DATE	DESCRIPTION	BY

DATE 5-9-07
SCALE 1"=10'
DESIGNED BY R.L.C.
DRAWN BY M.J.W.

PLAT OF CONDOMINIUM SUBDIVISION
TYPICAL SECTION
PHASE I
2900/3000 STONECLIFF
CONDOMINIUM ASSOCIATION, INC.
PORTION OF PLAT S.M. 77 - 126
THIRD ELECTION DISTRICT BALTIMORE COUNTY, MARYLAND

DRAWING NO.
SHEET 7 OF 7
KCI JOB NUMBER 0105391808

PLAT RECORD
TOTAL 15.00
RES# 0402 15.00
SN 01 053918
Folio 22 of 2007 05/30/2016